

# VECCHIA STADERA 1700 – 1800

## Pesa da 30 a 450 libbre

**Libbra Bolognese** = 361,85 grammi

**Libbra Piemontese** = 368,84 grammi

Punzonatura B 2:



Romano B:



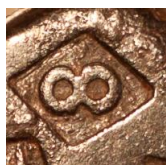
Punzonatura B 4:



Romano D:



Punzonatura A 8:



Romano A:



**1822** Punzonatura B 22:



**1823** Punzonatura B 23:



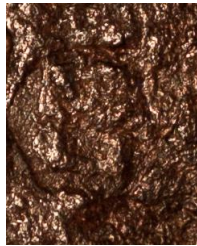
**1825** Punzonatura B 25:



**1826** Punzonatura A 26:



**1927** Punzonatura A 27:



**1830** Punzonatura A 30:



**1835** Punzonatura A 35:



**1836** Punzonatura A 36:



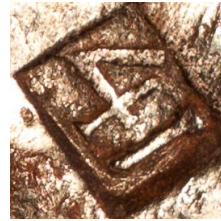
**1838** Punzonatura A 38:



**1841** Punzonatura A 41:



Romano B:



**1842** Punzonatura A 42:



**1843** Punzonatura A 43:



**1844** Punzonatura A 44:



Romano B:



**1845**

Romano B 45:



**1846** Punzonatura B 46:



Romano A1:



**1847** Punzonatura B 47:



Romano A1:



**1848** Punzonatura A 48:



Romano B:



**1849** Punzonatura B 49:



Romano B:



**1850** Punzonatura B 50:



Romano A:



**1851** Punzonatura B 51:



**1852** Punzonatura A 52:



Romano C:



**1853** Punzonatura B 53:



**1854** Punzonatura B 54:

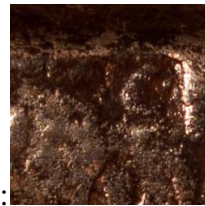


Romano A1:



**1855**

Romano B 55:



**1856** Punzonatura A 56:



Romano A:



**1858** Punzonatura A 58:



Romano B:



**1859** Punzonatura B 59:



Romano A:



Punzonatura A AZ:



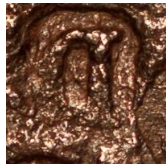
Romano B:



Punzonatura A CB\*:



Punzonatura A D:



Romano B:



Punzonatura B OP:



Punzonatura A P\*:



Romano A1:



Punzonatura B P:



Punzonatura B PNO:  
Pecunia Non Olet ?



Romano A:



Punzonatura B SB\*:



Punzonatura A TP:



Romano B:



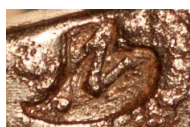
Punzonatura A V:



Romano C:



Punzonatura A N:



Romano B:



Punzonatura B Z:



Punzonatura B 6?:



**1861** Stemma B Sabauda:



Romano A:



? AGiglio Farnesiano ?  
**1850?** AGiglio Borbonico ?



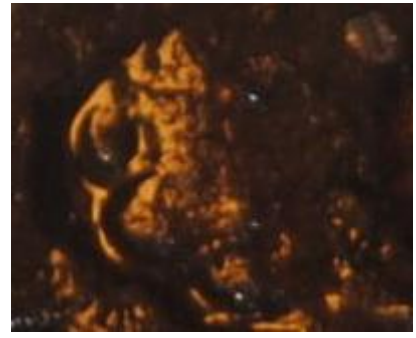
Romano B:



Stemma A Giglio1:



Giglio 1:



Stemma A Fiore:



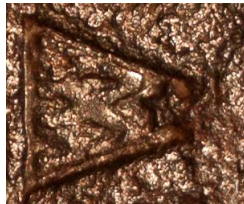
Stemma A Croce L:



Stemma A Stella:



Stemma A W+stella:



Stemma B Cerchio?:



Stemma B Fittone?:







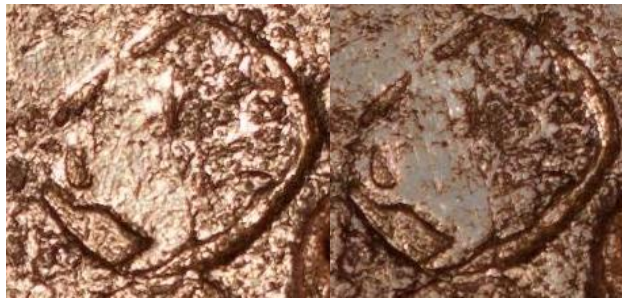
Stemma B Corona?:



Stemma A Ruota?:



Stemma B Frangia:



Stemma B Leone:

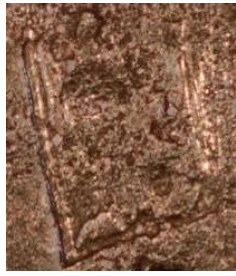
Leone S. Marco ?



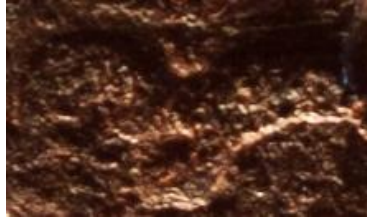
StemBTriangolo:

Doppio S con stemma ?

Stemma B OR?:



Stemma A Giogo?:



**Punzonatura Identificativo Stadera Nn 454:**



**Punzonatura Identificativo Romano D Nn 454:**

